

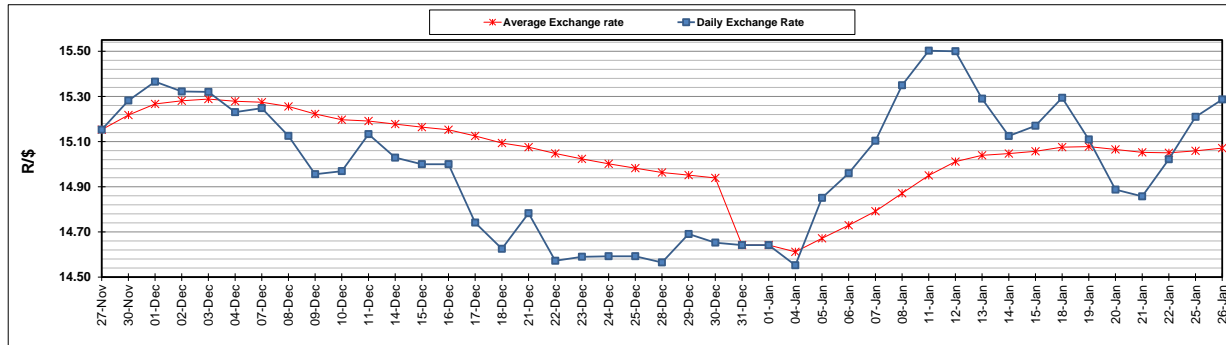
	PETROL 95 ULP	PETROL 93 ULP & LRP	DIESEL 0.05%	DIESEL 0.005%	ILL. PAR.
GAUTENG PUMP PRICE (SA c/l) AS FROM 06/01/2021	1,486.000	1,469.000	-	-	-
WHOLESALE PRICE (SA c/l) AS FROM 06/01/2021	-	-	1,301.420	1,301.820	739.688
SINGLE NATIONAL MAXIMUM RETAIL PRICE	-	-	-	-	930.000
BASIC FUEL PRICE - 26/01/2021 (SA c/l)	612.985	605.281	599.846	603.992	581.688
PRESS RELEASE CONTRIBUTION TO BFP 06/01/2021 - 26/01/2021 (SA c/l)	519.170	512.170	541.630	543.030	527.128
UNIT OVER/(UNDER) RECOVERY - 26/01/2021 (SA c/l)	(93.815)	(93.111)	(58.216)	(60.962)	(54.560)
AVERAGE BASIC FUEL PRICE 31/12/2020 - 26/01/2021	591.523	584.488	588.120	590.248	575.352
AVERAGE UNIT OVER/(UNDER) RECOVERY 31/12/2020 - 26/01/2021	(80.775)	(81.371)	(58.069)	(58.587)	(59.803)

ANALYSIS MOVEMENT OF AVERAGE OVER/(UNDER) RECOVERY

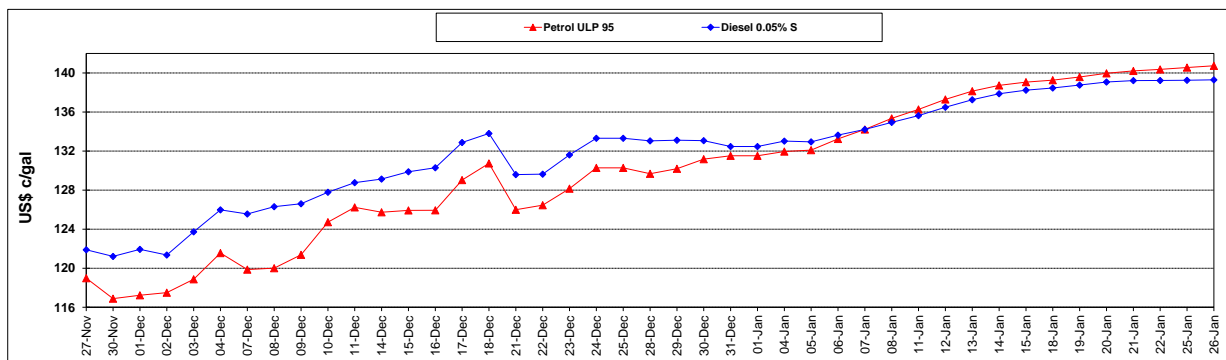
	PETROL 95	PETROL 93	DIESEL 0.05%	DIESEL 0.005%	ILL. PAR.
- MOVEMENT IN INTERNATIONAL PRODUCT PRICES	(75.589)	(76.248)	(52.914)	(53.412)	(54.760)
- MOVEMENT IN EXCHANGE RATE	(5.185)	(5.123)	(5.155)	(5.174)	(5.043)
AVERAGE UNIT OVER/(UNDER) RECOVERY 31/12/2020 - 26/01/2021	(80.775)	(81.371)	(58.069)	(58.587)	(59.803)

R/\$ EXCHANGE RATE - (R/\$15.2865 - 26/01/2021)

EXCHANGE RATE USED IN BASIC FUEL PRICE



INTERNATIONAL PRODUCT PRICES OF BASKET USED IN BASIC FUEL PRICE



BASIC FUEL PRICE IN SA CENTS PER LITRE

